



Rapid Flour Check Quick and precise flour method for the Brabender GlutoPeak®

Sergej Gall

Brabender GmbH & Co. KG Duisburg – Germany

...where quality is measured.

The Brabender GlutoPeak

The new flour method „Rapid Flour Check“

Brabender has just launched a new method for the GlutoPeak:

The Rapid Flour Check.

From now on, you can analyze flour and gluten quality

faster



and more precisely



...where quality is measured.

Brabender[®]

The Brabender GlutoPeak

The new flour method „ Rapid Flour Check“

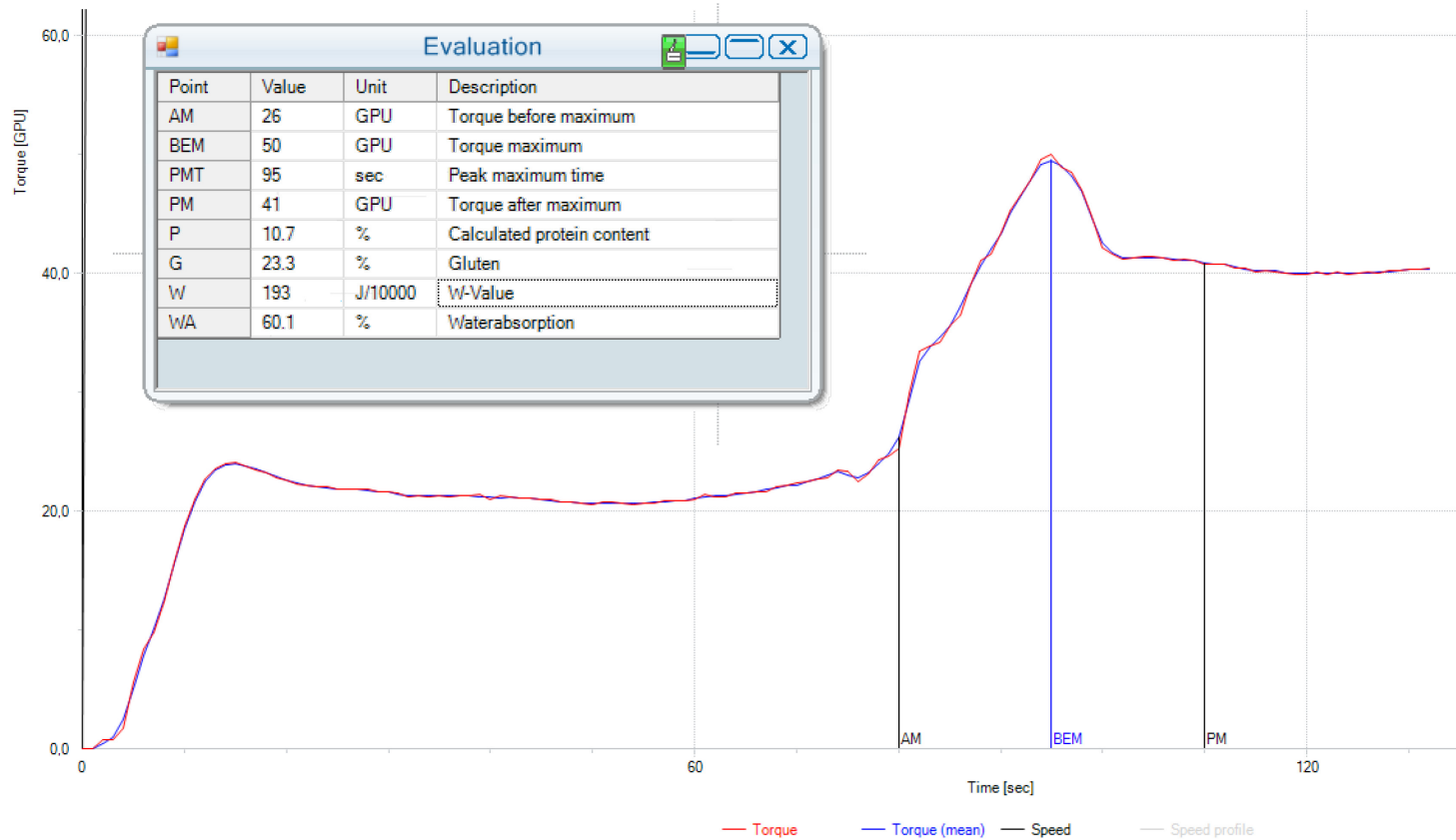
What is characteristic about this new method?

- Sample amount of 9 g dist. water and 9 g flour
- Speed: 2750 rpm
- Water bath temperature 36°C
- Test time < 5 min.
- New evaluation: “Rapid Flour Check”
Protein, Gluten, W-Value and Water absorption results in less than 5 min.
- New offset and factor – function
Use the possibility to adjust the GlutoPeak results

The Brabender GlutoPeak

The new flour method „Rapid Flour Check“

Evaluation visualized in the RFC software



...where quality is measured.

Brabender[®]

The Brabender GlutoPeak

Target groups

Who can benefit from this new method?

- Breeders
- Wheat traders
- Millers
- Bakers



...where quality is measured.

Brabender[®]

The Brabender GlutoPeak

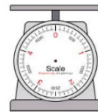
Benefits for breeders and wheat traders

How can breeders and wheat traders benefit from the new method?

Fast determination of... 

- Protein
- Gluten
- Water absorption
- W-Value

...with a **small sample amount**




...where quality is measured.

Brabender[®]

The Brabender GlutoPeak

Benefits for millers

How can millers benefit from the new method?

Use the GlutoPeak in the grain reception to get a **fast**  overview of the grain delivery / grain quality and make a quick decision about...



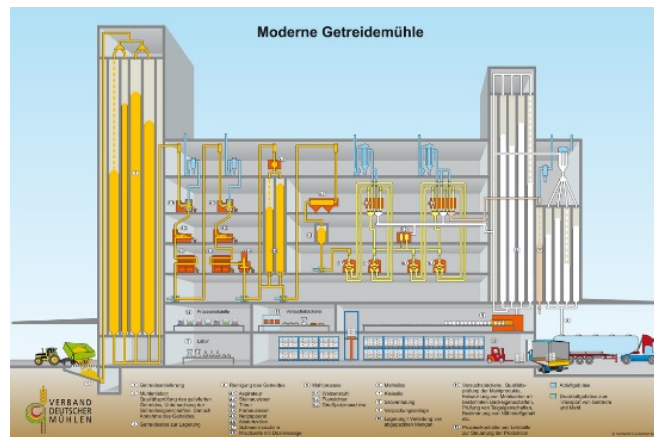
Accepting

or



Refusing

the grain delivery




...where quality is measured.

Brabender®

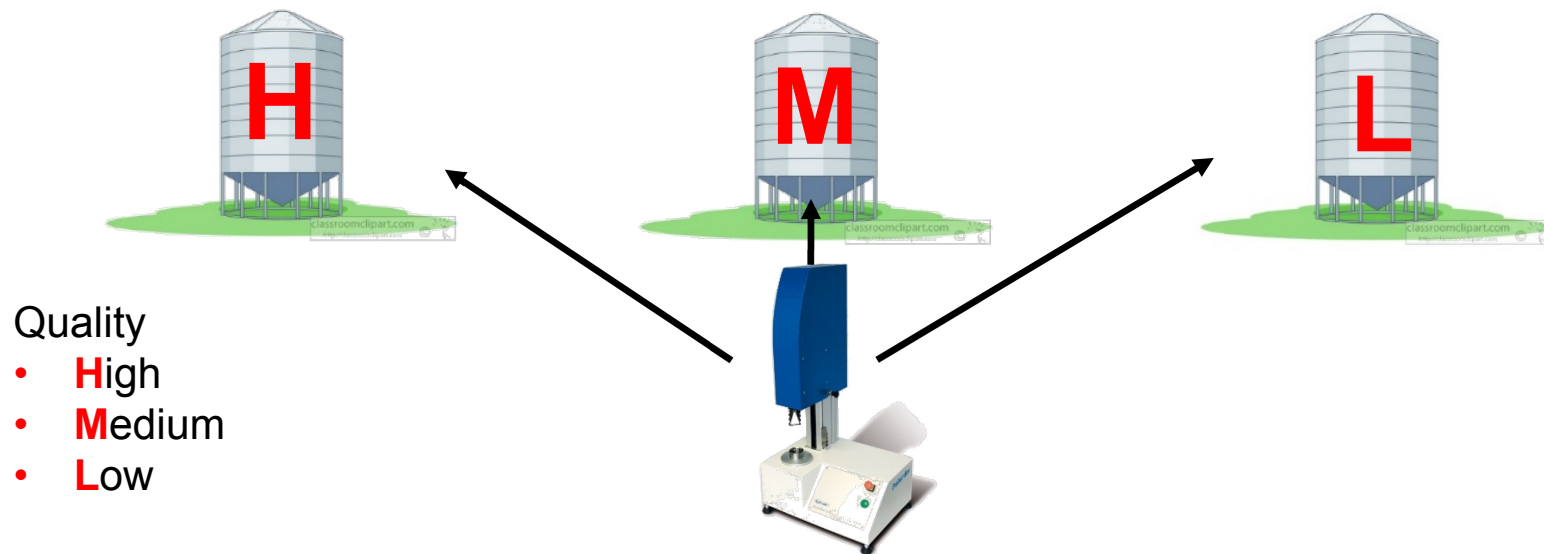
The Brabender GlutoPeak

Benefits for millers

How can millers benefit from the new method?

Use the GlutoPeak in the grain reception to get a **fast**  overview of the grain delivery / grain quality and make a quick decision about...

... in which silo the grain should be stored.




...where quality is measured.

Brabender[®]

The Brabender GlutoPeak

Benefits for millers

How can millers benefit from the new method?

Use the GlutoPeak for a **fast**  analysis, if the adjustment of the milling process goes in the right direction.



Reduce waste


...where quality is measured.

Brabender[®]

The Brabender GlutoPeak

Benefits for bakers

How can bakers benefit from the new method?

Use the GlutoPeak in the flour reception to get a **fast**  overview of the flour quality and make a quick decision about...



Accepting

or



Refusing

the flour delivery

...where quality is measured.

Brabender[®]

The Brabender GlutoPeak

An investment that pays off

How does the GlutoPeak pay off?

Fast analysis



= save time



= make money



A practical example:

Test time Farino + Glutomatic (25 min.) + Alveograph (40 min.)	= 65 min.
<u>Test time GlutoPeak</u>	<u>= 5 min.</u>
Time saved	= 60 min.

...where quality is measured.

Brabender[®]

The Brabender GlutoPeak

An investment that pays off

A mill conducts approx. 5 Alveograph, Farinograph and Glutomatic tests a day:
5 tests x 60 min. = **5 h saved per day**

Average salary lab staff (Germany) = 30 €/h

30 €/h x 5 h = **150 € saved per day**

150 € x 300 days = **45.000 € saved per year**

After how many months does the GlutoPeak pay off?



...where quality is measured.

Brabender[®]

The Brabender GlutoPeak

Curious? Contact us!

Brabender GmbH & Co. KG
Kulturstr. 49-55
47055 Duisburg
Germany

Mr. Sergej Gall
+49 203 7788-162
sergej.gall@brabender.com
<http://www.brabender.com>



...where quality is measured.

Brabender®